

# On-premise solution for Phone Appending

Intelligent Lookup Services, Inc. (ILS) delivers fast, flexible access to a nationwide residential directory using our proven name matching technology in a pre-configured appliance.

Enhance in-house records or verify contact information at any time without worrying about file transfer protocols or at what time the file will be returned.

The ILS matching software has a built-in intelligence to recognize record variations such as:

- Spelling
- Typing & Phonetic Error
- Synonyms & Nicknames
- Initials
- Truncation & Abbreviation
- Prefix & Suffix Variations
- Compound Spelling
- Missing Words
- Extra Words & Word Sequence Variations
- Format, Character, Convention Variations

Each target file must be manually entered into the ILS software to match against the residential dataset of 140 million household records. Any number of files can be queued as long as each of them are under 2GB in size. Define the fields and select the information to be appended to the target file. An intuitive graphical tabbed user interface makes it easy to learn and view all available options. The ILS software accepts fixed length, fixed width, tab, comma, pipe, colon, or semicolon delimited formats and recognizes a variety of record and text delimiters.

## ON-PREMISE ADVANTAGE

Easy to install and maintain, bring our high-performance server into your company's network for complete security control between file transfers.

## PROVEN ACCURACY

For over 15 years ILS has been refining our algorithm to match target & source files. Our software gives companies a powerful and cost-effective alternative to homegrown or outsourced solutions.

## CUSTOMIZED SOLUTIONS

The appliance comes with a nationwide residential directory of 100 million records to append information to your company's data. The software is customized to fit your internal database against which files are matched.

The screenshot shows the 'ILS - Job Description Screen' with the following details:

- Job #:** 1
- Project #:** test
- Client ID:** abx100
- File Name:** C:\N\Apr Appending File.txt
- File Type:** Tab Delimited
- Bytes Skipped:** File Beginning: 0, File End: 0
- Total # Records:** 1582
- # Empty Records:** 0
- # Leftover Bytes:** 0
- Non-Empty Records:** Min # of fields: 8, Max # of fields: 8
- Field/Text Delimiter Problems:** # Problem Recs: 0

**Criteria** (Name, Address, City/ST/Zip, Phone, Flags, Output):

- Minimum quality level for Match:** 52 - ILS Basic Guess
- Name-Only Matches:**  Don't include,  Include
- Address-Only Matches:**  Don't include,  Include
- Start processing at first data record in file (excluding header):**  Yes,  No
- Limit number of records processed (excluding header):**  No,  Yes
- Limit number of records with appended data:**  No,  Yes

Run Fast Lookup (NOTE: Hit rate will be reduced and no Name-Only matches will be found)

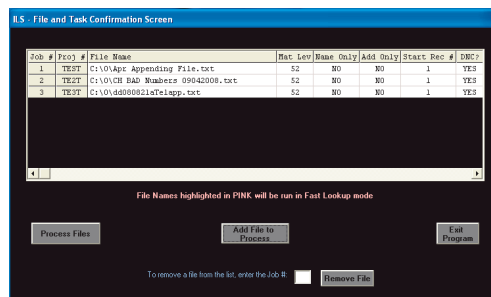
Buttons: Save Job Settings and Continue, Re-Initialize Input File, View Sample Records, Cancel File

- Select all of some of the records within your file to be processed.
- Choose your match quality level to reflect your error tolerance.



# ILS Appliance Features and Benefits

One of the great advantages of having a phone appending software on-premise appliance is sustaining IT policy compliance across the enterprise. Once an organization purchases a licensed appliance there is no limit on the number of employees who can access the ILS software to enhance records as-needed and get results within minutes. Submitted files can contain as little as 50 records



Files can be processed one at a time or queued to run in sequence. Each queued file can be a different file layout and format because each file is defined separately. By default, all processed files and reports are stored on the ILS appliance.

## COST

A one-time Implementation Fee is charged for initial delivery, integration, and on-site training. Regular monthly bill includes Appliance License Fee, Data & Maintenance Fee, and optional Consulting Services when requested.

## REAL-TIME PROCESSING

Any number of records can be submitted into the ILS appliance for data enhancement for instant processing. Please note files containing millions of records will take longer to process than files with less than 150,000 records.

## FLAT MONTHLY FEE

License fees for the appliance are based on estimated monthly usage volume and require a one year commitment.

Comprehensive summary screens display match results in a diagnostic fashion. Log reports are created after the file is processed and can be viewed at any time. Customization of log reports is available upon request.



## Technical Specifications

- Windows Vista Business 64-bit Edition
- 16GB RAM
- Three Processors
- Gigabit NIC
- Encrypted removable hard drive for nationwide data (users do not have direct access to hard drive)
- Unencrypted system drive
- Optical Drive DVD ROM/CD RW
- Internet access will only be for remote maintenance when requested

## AVAILABLE OPTIONS

The stated technical specifications on this brochure are for the baseline appliance. Delivered appliances reflect an optimized configuration based on an organization's network and speed requirements.



2 Professional Drive Suite 212  
Gaithersburg, MD 20879-3420  
Phone 240.243.41LS  
Fax 240.243.7000  
www.intelligentlookup.com